



## BL 2604



# Laser Barcode Scanner

- 300 ft (100 m) operational range
- Ergonomic design
- Audible & visible indicators

The BL2604 is a component of the 2604 Serie. Its gun-shaped and protected form factor offer efficient use of the scanner in multiple environments.

The 2604 family is a class 1 product, this means barcodes can be transmitted up to 100 meters.

Thanks to the laser technology, the BL2604 perfectly fits to applications requiring an aggressive scanning. It is designed to read barcode from a great distance.

**Reading distance: up to 17 in (53cm)**



### About Baracoda

Baracoda is the world's first and only manufacturer offering a full range of Bluetooth barcode scanners. Baracoda's field-proven wireless and barcode scanning solutions provide its customers and partners with efficient tools that are innovative, reliable and convenient to use, simplifying integration for a quick Return On Investment.

Baracoda, Inc. (US Office)  
45 Main street - Suite 616 - Brooklyn, NY 11201  
Ph: 718 488 9600 - Fx: 718 488 9601

Baracoda SA (Europe Office: France)  
30 Avenue de l'Amiral Lemonnier - 78160 Marly-Le-Roi  
Ph: +33 1 30 08 89 00 - Fx: +33 1 30 08 89 98



# BL 2604 Specifications

## STANDARD - REGULATORY

Fully compliant with Bluetooth® 1.1 Standard Gap & SPP profiles.  
CE - FCC - Bluetooth qualified.  
Class 1 Laser product.

## USER INTERFACE

Tri Color LED - Buzzer

## BLUETOOTH RANGE

Class 1: 300ft - 500 ft (100m - 150m)

## OPERATING MODES

Real Time  
Master  
Batch (1000 UPC barcodes, Flash Memory 64Kbytes)

## READING MODES

Autoscan  
Trigger

## SCAN ENGINE

Reading technology Laser  
Reading distance Up to 21 in (53cm)  
Scan rate 42 scans/s  
Scan angle 46° (+ / - 2)  
Light source laser 650 nm

## DECODING CAPABILITIES

Bar Codes Supported UPC-A/E, EAN-8/JAN-8, EAN-13/JAN-13, EAN128, Code 32, Full ASCII code 39, code 39, code 93, Interleaved 2 of 5, industry 2 of 5, Codabar, Code 128, Chinese Postcode, IATA and MSI/Plessey code.

## POWER

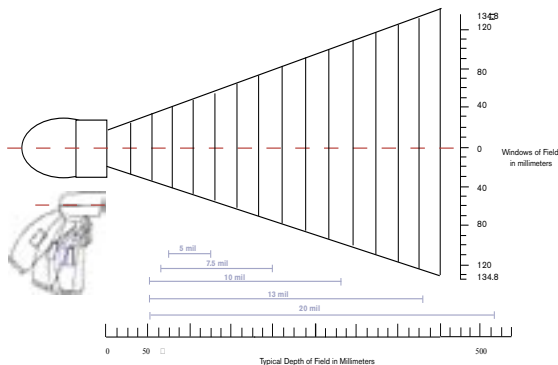
2 x AAA NimH - 2100 mAh rechargeable  
Battery life: more than 15 000 scans

## PHYSICAL

Length 5.63 in (143 mm)  
Width 3.10 in (78.8 mm)  
Height 6.08 in (154.5 mm)  
Weight 6.08 oz (180 g) without batteries

## ENVIRONMENT

Operating temperature 32°F (0°C) - 122°F (50°C)  
Storage temperature 14°F (-10°C) - 140°F (60°C)  
Operating humidity 5 - 95% (No condensing)  
Shock Several 3.3ft (1m) drops to concrete  
Ambient light Full darkness to sunlight



## General features

### One click connectivity products:

Just switch on your scanner to get connected!

### No data loss guarantee:

Barcodes are stored within internal memory until they are acknowledged by the application.

### Auto Reconnection:

If you scan barcodes out of the radio range, they will be stored in memory and automatically downloaded when getting back into range.

### One product, two modes:

- The scanner can be used in the Real Time Mode or Batch Mode.
- Real time mode will send barcodes while scanning.
- Batch mode will store barcodes on the scanner and the user will upload them when needed.

### Intuitive user interface:

- Only one button to switch on, connect and scan barcodes
- Multi color led for connection and battery status
- Sound beeps for successful scanning.

### Platforms compatibility:

Baracoda provides users with user-friendly software (BaracodaManager) and provides developers with state of the art APIs to ease the integration on the following mobile platforms:

- PC
- PPC 2002/2003; CE.NET; Palm OS
- Symbian (Mobile Phones)
- Most Bluetooth devices (printers, access points, ...)

### Plug and Play Solution

Real Plug & Play solution with Baracoda Serial Dongle (compatible with all devices equipped with a RS232 port)

## Package content



1 BL 2604  
2 rechargeable batteries  
1 Charger  
1 CD with all the documentation and software needed.

## Available accessory



### Protective boot:

The protective boot for the 2604 Serie is made of ruggedised high density foam. It is made by two separate units -one covering the hood and the second covering the base of the handle of the scanner- linked together by an elastic rope. While the protective boot does add some bulk to the scanner, its shock protection value compensates for this size increase. The protective boot also offers a small ring that can be attached to a lanyard or a retractable badge reel. It is ideal for mobile workers who need a rugged product.